



PROJECT - OFFSHORE GAS DETECTION INSTALLATION

BROWNFIELDS UPGRADE

SCOPE OF WORK

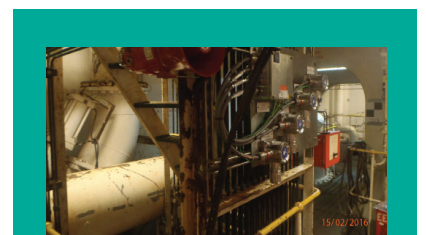
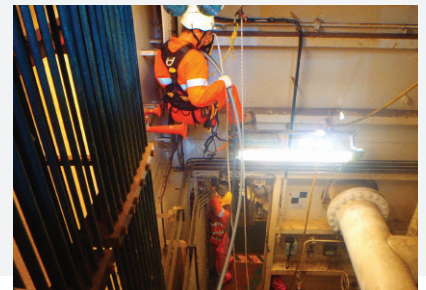
Haztech Solutions were engaged to provide the full installation and commissioning of the pump room gas detection system which included engineering procurement, and construction including rope access for parts of the installation.

CHALLENGE

An improvement notice issued by regulator for insufficient gas detection within the pump room. New gas detection equipment was required to be installed in several locations. New cables are run from the fire gas panel to each field device. Access to the equipment and full cable run would also be a challenge as equipment is installed at height and not easily accessible from grade.

THE SOLUTION

Typically, access would require a scaffold to be built which is costly and labour intensive instead Rope Access EEHA Inlecs were selected to upgrade the gas detection panel and head units including running of cables through multiple levels from the panel to each device. HazTech also used cold cutting techniques to install a cable path penetration into the side of the pump room. The Power supply for the unit was taken from an uninterruptible power supply distribution board within the accommodation, another cable penetration was necessary. This penetration was accessed by the Electrical Rope Access technicians as the penetration block was situated above the entrance to pump room. HazTech provided the calibration equipment and training for the staff onboard for the use of the gas detection unit.



AT A GLANCE

CLIENT

SANTOS

PROJECT

GAS DETECTION
INSTALLATION

LOCATION

NORTH WEST SHELF, WA

SERVICES

INDUSTRIAL SERVICES

SOLUTION DRIVEN

Haztech listened to our client's issues and set about making changes that resulted in;

- Streamlining the project by removing the need for labour intensive scaffolding,
- Addressed the regulators improvement notice
- Completed the project without incident
- Worked with the operations staff to ensure no outages were experienced during the project
- Assisted client with the Management of Change process which included project scoping, detailed work pack and updated drawings

“HazTech Solutions are a recognised leader in the provision of specialist electrical industrial services”.



WE'RE ALWAYS AVAILABLE FOR A CHAT TO DISCUSS HOW WE CAN BEST SUPPORT YOU AND YOUR BUSINESS.

Call: **+61 8 6268 0486**
or email: info@haztechsolutions.com.au



HAZTECH
SOLUTIONS

HazTech Solutions is a solution-focused Electrical and Instrumentation company providing a range of specialist services to various markets.

HAZARDOUS AREA
INDUSTRIAL SERVICES
ROPE ACCESS
QA / QC
ENGINEERING

HEAD OFFICE (PERTH)
Unit 23, 128 Brown Street
East Perth, WA 6004

+61 8 6268 0486

MELBOURNE OFFICE
Level 2, 818 Whitehorse Road
Box Hill, VIC 3128

+61 3 9895 8585

SINGAPORE OFFICE
Level 24, 31 Rochester Drive
Park Avenue Rochester
Singapore 138637

+61 8 6268 0486

